



EXCURSION

CLASS A DIESEL



Pacific Blue



Iron



Mocha



White Diamond



Raceway Red



See your Fleetwood dealer or visit www.fleetwoodrv.com to view all graphic and color choices.

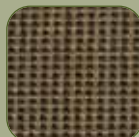
INTERIOR DÉCORS

Carbon

LIVING/DINING ROOM



Dinette Cushions

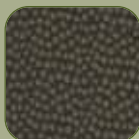


Sofa Throw Pillow



Ultraleather™ Driver & Front Passenger Seats, Sofa

BEDROOM



Bedsread



Pillow Shams & Headboard



Throw Pillows

Cinnabar

LIVING/DINING ROOM



Dinette Cushions



Sofa Throw Pillow



Ultraleather™ Driver & Front Passenger Seats, Sofa

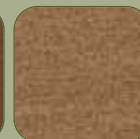
BEDROOM



Bedsread



Pillow Shams & Headboard



Throw Pillows

Coriander

LIVING/DINING ROOM



Dinette Cushions



Sofa Throw Pillow

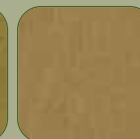


Ultraleather™ Driver & Front Passenger Seats, Sofa

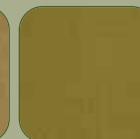
BEDROOM



Bedsread



Pillow Shams & Headboard



Throw Pillows

Wood Finishes



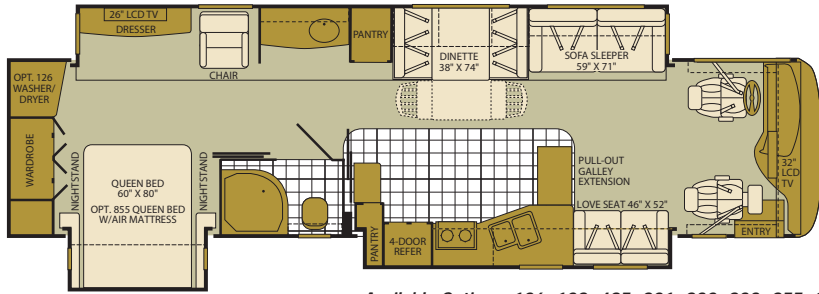
Symphony Cherry



Plantation Cherry

FLOOR PLANS

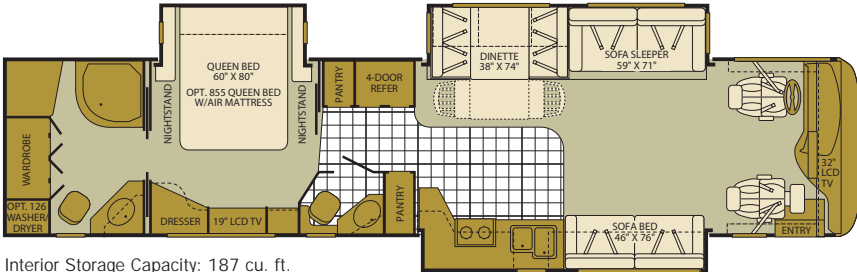
39R Full-Wall Slide Triple Slide-Out



Available Options: 126, 128, 495, 821, 832, 833, 855, 874

Interior Storage Capacity: 187 cu. ft.
Exterior Storage Capacity: 203 cu. ft.

40E Triple Slide-Out



Available Options: 126, 128, 495, 832, 833, 855

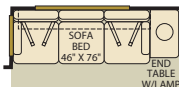
Interior Storage Capacity: 187 cu. ft.
Exterior Storage Capacity: 242 cu. ft.

OPTIONS

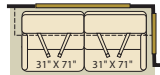
OPT. 87
32" LCD TV

REFER

OPT. 128 DOMETIC
14 CU. FT. SIDE BY
SIDE STAINLESS
STEEL REFER



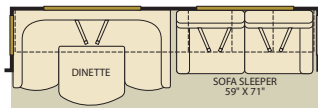
OPT. 174 ULTRALEATHER SOFA BED
W/END TABLE AND LAMP



OPT. 495 ULTRA-FLEX RECLINER



OPT. 495 ULTRA-FLEX RECLINER (40X ONLY)



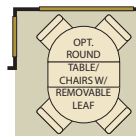
OPT. 635 U-SHAPED SECTIONAL SOFA/DINETTE AND
ULTRALEATHER SOFA SLEEPER W/AIR MATTRESS



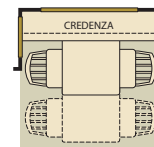
OPT. 821
RECLINER W/TABLE



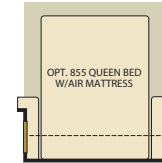
OPT. 874
DESK W/FOLD-UP CHAIR



OPT. 832 FREE-STANDING
DINETTE W/REMOVABLE
LEAF



OPT. 833 FREE-STANDING
DINETTE W/CREDENZA



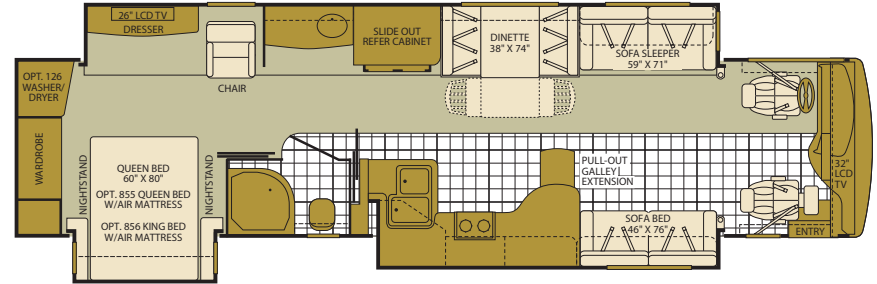
OPT. 855 QUEEN BED
W/AIR MATTRESS



OPT. 856 KING BED
W/AIR MATTRESS

40T Full-Wall Slide Triple Slide-Out

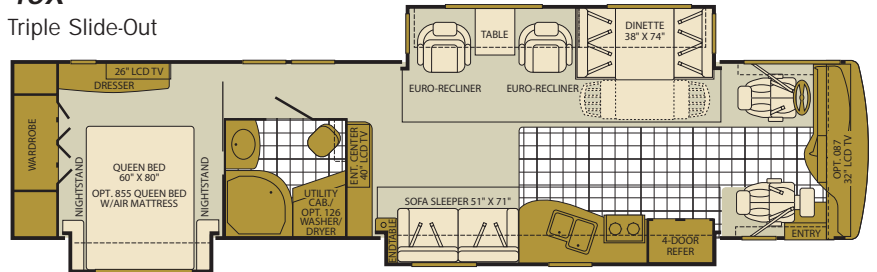
**NEW
FLOOR PLAN**



Interior Storage Capacity: 197 cu. ft.
Exterior Storage Capacity: 242 cu. ft.

Available Options: 126, 128, 142, 495, 832, 833, 855, 856

40X Triple Slide-Out



Interior Storage Capacity: 195 cu. ft.
Exterior Storage Capacity: 242 cu. ft.

Available Options: 87, 126, 128, 174, 495, 635, 832, 833, 855

Seatbelt configuration may vary depending on options chosen.

STANDARD FEATURES

INTERIOR

INTERIOR - THROUGHOUT

- 10 Gallon, w/16 Gallon, Output Quick Recovery Water Heater w/Direct Spark Ignition (Gas/Electric)
- 20,000/30,000 Btu Dual Furnaces
- 84" Interior Ceiling Height
- Complete TuffPEX Plumbing System
- Crown Molding w/Decorative Corner Caps
- Deluxe Day/Night Roller Blinds
- Deluxe Roller Bearing, Full Extension Drawer Guides & Transit-Ship Locks
- Demand Water Pump w/Filter
- Dual Roof Mounted A/C High Efficiency, Chill Grill w/Solar Panel & on Front A/C
- Hardwood Cabinet Doors/Drawers
- Plush Carpet w/Carpet Pad
- Solid Surface Countertops and Sink Covers
- Vinyl Padded Ceiling
- Wall Switches (Includes Switches for Ceiling Lights & Vents)
- Water Heater Bypass
- Whole Coach Water Filtration System
- Wood Finish Return Air Intake for Furnace
- Laminate Flooring Entry to Galley
- Central Vacuum System

DRIVER CONVENIENCE

- Adjustable 3 Point Seat Belts at Driver & Front Passenger Seats (with adjustable shoulder straps)
- Pioneer® AM/FM/CD Stereo w/Navigation, Sirius Satellite Radio® Ready
- Color Back-Up Monitor w/Side Cameras Integrated in Mirrors
- Auxiliary Start Circuit
- Backlit Switches & Gauges
- Battery Disconnect System
- CB Radio Ready
- Cruise Control
- Driver/Passenger Powered Side Shades
- Driver/Front Passenger Ultraleather™ Captain's Chairs w/Reclining Back/Slide Controls/Power/Heated/Adjustable Arms
- High-Output Auto A/C Heater Combo
- Passenger Armrest w/Integrated Magazine Rack
- Passenger Seat w/Power Footrest & Adjustable Armrest
- Power Driver/Front Passenger Sun Visors
- Radio Switch Main/Auxiliary Power
- Soft Surface Automotive Dash w/Area for Laptop GPS (Laptop & GPS Not Included)
- Smart Wheel with Tilt/Telescoping Steering Wheel

GALLEY

- 1.4 cu.ft. Convection Microwave Oven w/Stainless Steel Front
- Norcold® 12 cu.ft. 4 Door Stainless Steel Refrigerator w/Ice Maker and Water Dispenser
- 2 Burner, High-Output Electric Flat Panel Cook Top
- Adjustable Cabinet Shelves (Select Cabinets)
- Fan-Tastic® Power Roof Vent w/Wall Switch
- Laminate Floor Tile
- Large, Double Stainless Steel Sink
- Single Lever Galley Faucet w/Pullout Sprayer
- Six Person Pull-Out Dinette Table (Select Models)

- Slide-Out Dinette Bins w/Latches
- Soap & Lotion Dispensers
- Solid Surface Countertop, Sink & Range Covers
- Under Galley Shelving & Wastebasket
- Window Over Sink (Select Models)

LIVING ROOM

- Samsung® 32" LCD HDTV (40" 40X Model)
- DSS/Mobil Auto Tracking Satellite Dish (Covered)
- Samsung® DVD Home Theater Sound System w/Hidden Surround Sound Speakers
- Accent/Night Lighting in Overhead
- Easy Sweep Laminate Flooring Entry to Galley
- Flexsteel® Residential Seat Styling
- TV Antenna w/Signal Booster
- Ultraleather™ Sofa Bed (40E & 40T)
- Ultraleather™ Sofa Sleeper
- Ultraleather™ Love Seat (39R)

BEDROOM

- Bedspread w/Decor Pillows
- Cabinet Storage Above the Bed
- Coffin Ceiling
- Mirrored Wardrobe Doors
- Remote Generator Start
- Restonic® Deluxe Pillow Top Innerspring Mattress
- Ventilated Rear Wardrobe w/Cedar Lining, Carpeted Floor & Wire Organizer
- Wardrobe Lighting
- Bedroom Entertainment Center w/Samsung® 26" LCD HDTV and Home Theater

BATHROOM

- Cabinet Toe Kicks
- Coordinated Bath Accessories
- Fan-Tastic® Power Roof Vent w/Wall Switch
- Hardwood Bath Door/Trims
- Laminate Floor Tile
- Lighted Assist Handle
- Molded Shower Enclosure w/Skylight
- Porcelain Toilet w/Water Saver
- Stainless Steel Sink

SAFETY/CONVENIENCE

- Carbon Monoxide Detector/Alarm
- Energy Management System (EMS) w/Soft Start
- Fire Extinguisher
- Multiple Seatbelt Locations
- Propane Detector/Alarm
- Smoke Detector/Alarm
- Neutral Loss, Low & High Voltage Protection

EXTERIOR

EXTERIOR - THROUGHOUT

- 120V/12V AC/DC Converter
- 120V/12V Wire Raceways
- 2000 Watt Pure Sine Wave Inverter w/Remote
- 4 Point Automatic Levelers
- 50 Amp Service
- 8.0 kW Onan® Quiet Diesel Generator
- Awning Rail/Drip Molding (Both Sides)
- Exterior Graphics Available in 5 Colorways
- Dual Battery Charge Control
- Dual Pane Windows w/Screens
- Fiberglass Front Quarter Panels

- Side Swinging Luggage Doors
- Fiberglass Front/Rear Caps w/High Mounted Taillights
- Fiberglass Wheel Well Trims
- Full-Body Paint
- Remote/Heated Rear View Chrome Mirrors w/Side Cameras
- Utility Compartment w/Exterior Shower
- Water Pump Switch (Multiple Locations)
- Weather Pro Power Awnings (Patio Awning Includes Wind Sensor)
- Front and Mid Coach Docking Lights

AUTOMOTIVE

- 10,000 lb. Weight Distributing Hitch Receiver w/7 Pin Electrical Hook-Up†
- 360HP Cummins® ISC 8.3L Engine
- Aluminum Wheels
- Dual Fuel Fill (One on Each Side)
- Fog Lamps
- Freightliner® Chassis
- Large One-Piece Bonded-in Windshield
- Mud Flaps
- Color Rear and Side Vision Cameras w/Monitor in Radio
- Single Motor Diesel Equipment Windshield Wipers w/Wet Arm
- Tire Valve Extenders
- Underhood Utility Light
- Chrome Spotlight w/Remote Control

SAFETY/CONVENIENCE

- 4 Wheel ABS Air Brakes
- 20' Sewer Hose
- Automotive Safety Glass
- Central Electrical Panel
- Dual Fresh Water Fills
- Daytime Running Lights
- Doorside Patio Receptacle
- Entry Door w/Screen Door & Deadbolt Lock
- Four 6V/Deep Cycle House Batteries
- Keyless Entry Remote
- Lighted Entry Assist Handle
- Park Cable Receptacle
- Dual Porch Lights (Doorside)
- Power Entry Step
- Roof Ladder
- Toilet Tank San-T-Flush™ System
- Touch Sensor Tank Monitoring System

STORAGE

- Continuous One-Piece Compartment Bulb Seal
- Hidden, Stainless Steel Latch Rods
- Insulated Aluminum Luggage Doors w/Single Paddle Metal Latches & Stainless Steel Hinges
- Lighted Luggage Compartments
- Pass Through Storage
- Side Swinging Luggage Doors

BODY STRUCTURE

- Aluminum Interlocking Floor/Wall/Ceiling Framing
- Color Coordinated Royal Tuff-Ply Roof
- Heated Water & Holding Tank Compartments
- Royal Tuff-Ply Radius Roof w/Ducted A/C
- Vacu-bond® Upper/Lower Floors

- Full-Wall Slide (Patent Pending)
- Power Bridge™ Platform (Fleetwood Exclusive)

OPTIONS

INTERIOR

- Automatic Generator Start System
- CSA Package (Canadian Specs)**
- Heat Pumps
- Washer/Dryer

GALLEY

- 14 cu.ft. Dometic® Stainless Steel Frost-Free Refrigerator
- Free-Standing Dinette w/Credenza
- Free-Standing Table & Chairs
- Flip Down 10" LCD TV w/DVD Player
- 17 cu.ft. Norcold® 4 Door Refrigerator w/Ice Maker and Water Dispenser in Door (40T)

LIVING ROOM

- Samsung® 32" LCD HDTV in Front Overhead (40X Only)
- Ultraleather™ Sofa Sleeper w/Air Mattress
- Leather Euro Recliner Free-Standing (Select Models)
- Desk (39L & 39R)

BEDROOM

- Queen Adjustable Air Mattress
- King Adjustable Air Mattress (40T)

EXTERIOR

- Entertainment Center w/Samsung® 32" LCD HDTV and Stereo
- Diamond Shield Clear Front Protective Mask
- Exterior Grill and Kitchenette
- Window Awning Package

FLEETWOOD ADVANTAGES

- Power Bridge™ Chassis (Fleetwood Exclusive)
- Vacu-bond® Walls w/Smooth High Gloss Exterior Tuff-Coat® Fiberglass
- Large One-Piece Bonded-in Windshield
- Pass Through Storage
- Side Swinging Luggage Doors
- 84" Interior Ceiling Height
- Neutral Loss, Low & High Voltage Protection

**CSA standards may require substitution or deletion to achieve conformance.

WEIGHTS & MEASUREMENTS

FREIGHTLINER® CHASSIS

MODELS	39R	40E	40T	40X
Engine Displacement (Liters)	8.3	8.3	8.3	8.3
Wheelbase (Inches)	252"	276"	276"	276"
GVWR (lbs) ¹	31,000	31,000	31,000	31,000
Front GAWR (lbs) ²	12,000	12,000	12,000	12,000
Rear GAWR (lbs) ²	19,000	19,000	19,000	19,000
GCWR (lbs) ³	41,000	41,000	41,000	41,000
Hitch Rating Weight (lbs) [†]	10,000	10,000	10,000	10,000
Tongue Weight (lbs) [†]	1,000	1,000	1,000	1,000
Fuel Capacity (gal)	100	100	100	100

DIMENSIONS & CAPACITIES

MODELS	39R	40E	40T	40X
Overall Length ⁴	39' 6"	41' 6"	39' 6"	41' 6"
Overall Height (with A/C)	12' 10"	12' 10"	12' 10"	12' 10"
Overall Width (maximum) ^{5,6}	102"	102"	102"	102"
Interior Height (maximum)	84"	84"	84"	84"
Interior Width (maximum)	96"	96"	96"	96"
Fresh Water Holding Tank (gal)	105	105	105	105
Grey Water Holding Tank (gal)	75	75	75	75
Black Water Holding Tank (gal)	50	50	50	50
Appliance Propane Tank (gal) (WC) ⁷	37.5	37.5	37.5	37.5
Water Heater Tank (gal)	10	10	10	10

Liquid Weight Reference: Water (gal) = (8.3 lbs/3.8kgs) Fuel (gal) = 7.1 lbs/2.8 kgs Propane (gal) = (4.2 lbs/1.9 kgs)

Metric Conversion: Multiply pounds x 0.453 to obtain kilograms. Multiply gallons x 3.785 to obtain liters. Multiply liters x 61 to obtain cubic inches.

CHASSIS

Model: Freightliner®

Alternator: 170 Amp Lecce Neville®

Engine: Cummins® ISC 8.3L 360HP

Transmission: Allison® 3000MH 6-Speed w/Electronic Shifter

Torque: 1050 lbs-ft

Horsepower: 360 HP

1. GVWR (Gross Vehicle Weight Rating) is the maximum permissible weight of this fully loaded motor home. The GVWR is equal to or greater than the sum of the (UVW) unloaded vehicle weight plus the (OCCC) occupant cargo carrying capacity*.

2. GAWR (Gross Axle Weight Rating) is the maximum permissible loaded weight a specific axle is designed to carry.

3. GCWR (Gross Combined Weight Rating) is the value specified by the motor home manufacturer as the maximum allowable loaded weight of this motor home with its towed vehicle. Towing and braking capacities may be different. Refer to Fleetwood and chassis manufacturer's manuals for complete information.

4. Length is measured from front bumper to rear bumper (excludes accessories).

5. Excludes safety equipment and awnings.

6. Motor homes feature a body-width over 96" which will restrict your access to certain roads. Before purchasing, you should research any state and/or province road laws which may affect your usage.

7. Tank manufacturer's listed water capacity (WC). Actual propane capacity is 80% of water listing as required by the safety code.

† The chassis manufacturer recommends the installation of a supplemental brake control system to activate the brakes on the vehicle or trailer you are towing. Hitch receiver ratings expressed are maximum for the hitch receiver installed and may require the purchase of additional equipment that is dependent on the weight of the towed load. Consult with hitch receiver manufacturer for further information.

N/A = not available at time of printing.

*UVW and OCCC are found on the label containing the federal certification tag in each RV.

IMPORTANT — PLEASE READ: Product information, photography and illustrations included in this publication were as accurate as possible at the time of printing. For further product information and changes, please visit our website at www.fleetwoodrv.com or contact your local Fleetwood dealer. Prices, materials, design and specifications are subject to change without notice. All weights, fuel, liquid capacities and dimensions are approximate. Fleetwood has designed its recreational vehicles to provide a variety of uses for its customers. Each vehicle features optimal seating, sleeping, storage and fluid capacities. The user is responsible for selecting the proper combination of loads (i.e. occupants, equipment, fluids, cargo, etc.) to ensure that the vehicle's capacities are not exceeded.