



EXPEDITION

CLASS A DIESEL



Desert Sand



White Diamond



Patina



Silver Leaf

FLEETWOOD
Driven to Explore

INTERIOR DECORS

Spa

LIVING/DINING ROOM



Dinette Cushions



Sofa



Ultraleather™
Driver & Front
Passenger
Seats,
Sofa (optional)

BEDROOM



Headboard &
Bedspread



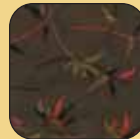
Pillow Shams



Throw Pillows

Ebony

LIVING/DINING ROOM



Dinette Cushions



Sofa



Ultraleather™
Driver & Front
Passenger
Seats,
Sofa (optional)

BEDROOM



Headboard &
Bedspread



Pillow Shams



Throw Pillows

Blue Topaz

LIVING/DINING ROOM



Dinette Cushions



Sofa



Ultraleather™
Driver & Front
Passenger
Seats,
Sofa (optional)

BEDROOM



Headboard &
Bedspread



Pillow Shams



Throw Pillows

WOOD FINISHES



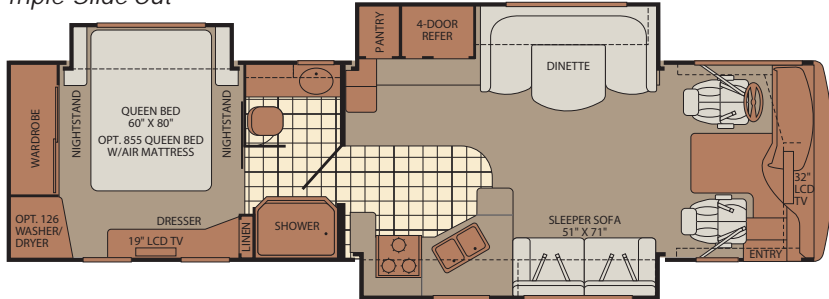
Symphony Cherry



Plantation Cherry

FLOOR PLANS

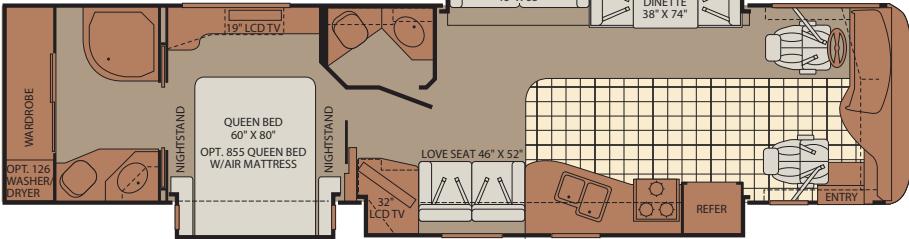
34H
Triple Slide-Out



Interior Storage Capacity: 156 cu. ft.
Exterior Storage Capacity: 133 cu. ft.

Available Options: 113, 126, 127
201, 497, 855

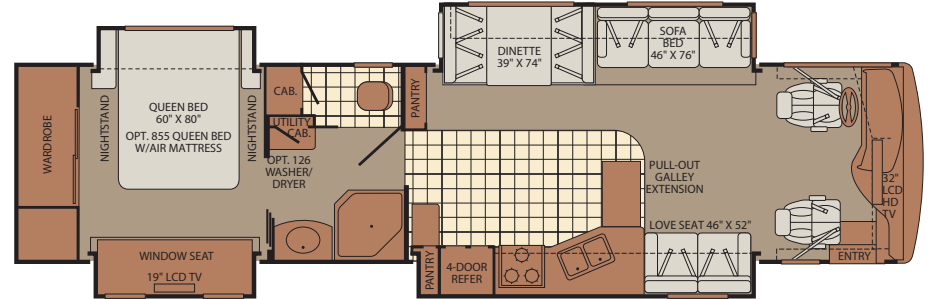
38F
Triple Slide-Out



Interior Storage Capacity: 163 cu. ft.
Exterior Storage Capacity: 203 cu. ft.

Available Options: 113, 126, 127,
173, 497, 832, 833, 855

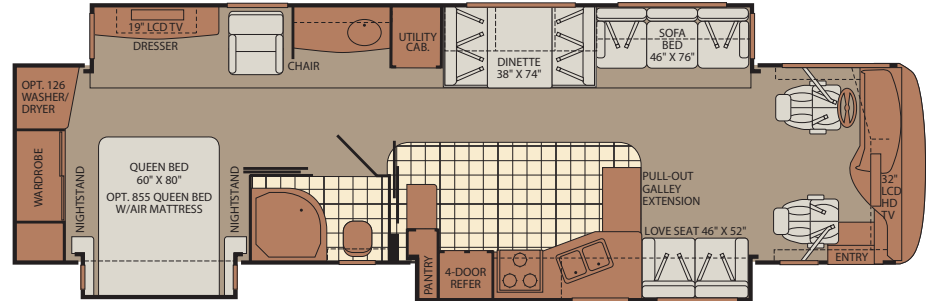
38L
Quad Slide-Out



Interior Storage Capacity: 198 cu. ft.
Exterior Storage Capacity: 203 cu. ft.

Available Options: 113, 126, 127, 173,
200, 357, 497, 821, 832, 833, 855

38R
Full-Wall Slide
Triple Slide-Out



Interior Storage Capacity: 217 cu. ft.
Exterior Storage Capacity: 203 cu. ft.

Available Options: 113, 126, 127, 173,
200, 497, 821, 832, 833, 855

OPTIONS



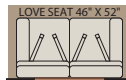
OPT. 113
3-BURNER
RANGE W/OVEN



OPT. 126
WASHER/DRYER



OPT. 127
DOMESTIC 14 CU. FT.
SIDE BY SIDE REFER



OPT. 173
ULTRALEATHER LOVE SEAT



OPT. 200
ULTRALEATHER SOFA SLEEPER
W/AIR MATTRESS



OPT. 201
ULTRALEATHER SOFA SLEEPER
W/AIR MATTRESS



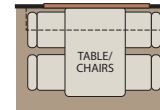
OPT. 357
SLIDE-OUT BEDROOM
ENTERTAINMENT CENTER



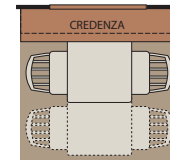
OPT. 497
PASSENGER SEAT
W/FOOTREST



OPT. 821
RECLINER W/TABLE



OPT. 832
FREE-STANDING
DINETTE



OPT. 833
FREE-STANDING
DINETTE W/CREDENZA



OPT. 855
QUEEN BED 60" X 80"
W/AIR MATTRESS

EXPEDITION

STANDARD FEATURES

INTERIOR

INTERIOR THROUGHOUT

- 10 Gallon Quick Recovery Water Heater w/Direct Spark Ignition (Gas/Electric)
- 20,000/25,000 Btu Dual Furnaces (20,000/30,000 Btu Dual Furnaces on 38R Model)
- 84" Interior Ceiling Height
- Ceiling Ducted Roof A/C
- Brushed Nickel Cabinet Hardware
- Complete TuffPEX Plumbing System
- Crown Molding
- Day/Night Pleated Shades
- Deluxe Roller Bearing, Full Extension Drawer Guides & Transit-Ship Locks
- Demand Water Pump w/Filter
- Dual Roof Mounted A/C High Efficiency w/Chill Grille & Single Solar Panel on Front A/C
- Hardwood Cabinet Doors/Drawers
- Large Overhead Cabinets w/Raised Panel Doors
- Plush Carpet w/Carpet Pad
- Radius Corner Cabinetry
- Solar Battery Charger
- Solid Surface Countertops (Lavy & Galley)
- Vinyl Flooring Entry to Galley
- Wall Switches (Includes Switches for Ceiling Lights & Vents)
- Water Heater Bypass
- Whole Coach Water Filtration System
- Window Coverings
- Wood Finish Return Air Intake for Furnace
- Woven Jacquard Feature Fabrics

DRIVER CONVENIENCE

- Adjustable 3 Point Seat Belts at Driver & Front Passenger Seats (with adjustable shoulder straps)
- AM/FM/CD Stereo, Sirius Satellite Radio® Ready
- Color Back-Up Monitor
- Auto A/C Heater Combo
- Auxiliary Start Circuit
- Battery Disconnect System
- CB Radio Ready
- Cruise Control
- Dash Fans
- Driver/Front Passenger Ultraleather™ Captain's Chairs w/Reclining Back/Slide Controls w/Power Driver Seat
- Multi-Function Sun Visor
- Passenger Armrest w/Integrated Magazine Rack
- Radio Switch Main/Auxiliary Power
- Soft Surface Automotive Dash w/Snack Tray & Convenient Service Door
- Tilt/Telescoping Steering Wheel

GALLEY

- 22" 3-Burner, High Output Cooktop
- Cabinet Toe Kicks
- Convection Microwave Oven
- Fan-Tastic® Power Roof Vent w/Wall Switch
- Large Double Sink

- Norcold® 12 cu.ft. Refrigerator
- Roll-Out Countertop (38R Model)
- Single Lever Faucet w/Pull Out Sprayer
- Soap Dispenser
- Solid Surface Countertop, Sink & Range Covers, Mirror Backsplash in Galley
- Under Galley Shelving & Wastebasket
- Vinyl Flooring
- Window Over Sink

LIVING ROOM

- Samsung® 32" LCD HDTV (32" Midship on 38F)
- Beveled Decor Mirrors
- Flexsteel® Residential Seat Styling
- Samsung® Home Theater Sound System
- Satellite Dish Ready
- TV Antenna w/Signal Booster
- Video Switch Box

BEDROOM

- Samsung® 19" LCD HDTV
- Bedspread w/Decor Pillows
- Innerspring Mattress
- Rear Speakers
- Remote Generator Start
- Ventilated Rear Wardrobe w/Cedar Lining, Carpeted Floor & Wire Organizer

BATHROOM

- A/C Venting
- Assist Handle
- Brushed Chrome Bath Accessories
- Cabinet Toe Kicks
- Fan-Tastic® Power Roof Vent w/Wall Switch
- Glass Shower w/Skylight and Low Threshold
- Make-Up Lights
- Porcelain Toilet w/Water Saver
- Vinyl Flooring

SAFETY/CONVENIENCE

- Carbon Monoxide Detector/Alarm
- Energy Management System (EMS) w/Soft Start
- Fire Extinguisher
- Propane Detector/Alarm
- RV System Monitor Panel
- Smoke Detector/Alarm
- Multiple Seatbelt Locations
- Neutral Loss, Low & High Voltage Protection

EXTERIOR

EXTERIOR THROUGHOUT

- 120V/12V AC/DC Converter
- 120V/12V Wire Raceways
- 2000 Watt Pure Sine Wave Inverter w/Remote
- 4 Point Automatic Levelers
- 8.0 kW Onan® Quiet Diesel Generator
- 50 Amp Service
- Aerodynamic Bus Styling
- Awning Rail/Drip Molding (Both Sides)
- Dual Pane Windows w/Screens

- Fiberglass Front & Rear Bumpers & Wheel Wells
- Fiberglass Front/Rear Caps w/High Mounted Taillights
- Full-Body Paint
- Patio & Entry Door Awning
- Patio Receptacles
- Remote/Heated Rear View Mirrors
- Water Pump Switch (Multiple Locations)

AUTOMOTIVE

- 10,000 lb. Weight Distributing Hitch Receiver w/7 Pin Electrical Hook-Up†
- 325HP Cummins® ISB 6.7L Engine
- Air Suspension
- Dual Fuel Fill (One on Each Side)
- Fog Lamps
- Freightliner® Chassis
- Halogen Headlamps
- Large One-Piece Bonded-in Windshield
- Mud Flaps
- Rear Vision Color Adjustable Camera
- Stainless Steel Wheel Simulators
- Single Motor Diesel Equipment Windshield Wipers w/Wet Arm
- Tire Valve Extenders
- Underhood Utility Light

SAFETY/CONVENIENCE

- 20' Sewer Hose
- Dual Fresh Water Fills
- Power Entry Step Cover
- Central Electrical Panel
- Dual Battery Charge Control
- Four 6V/Deep Cycle House Batteries
- Park Cable Receptacle
- Dual Porch Lights (Doorside)
- Power Entry Step
- Radius Entry Door w/Deadbolt Latch (Keyless Entry Ready)
- Roof Ladder
- Side Opening, Engine Access Door
- Toilet Tank San-T-Flush™ System
- Utility Compartment w/Exterior Shower
- 4 Wheel ABS Air Brakes
- Automotive Safety Glass
- Daytime Running Lights

BODY STRUCTURE

- Aluminum Interlocking Floor/Wall/Ceiling Framing
- Heated Water & Holding Tank Compartments
- Royal Tuff-Ply Radius Roof w/Ducted A/C
- Vacu-bond® Upper/Lower Floors
- Power Bridge™ Platform (Fleetwood Exclusive)

STORAGE

- Aluminum Luggage Door Seal Frames
- Central Utility Compartment
- Continuous One-Piece Compartment Bulb Seal
- Full Pass Through Storage
- Side Hinge Luggage Doors

OPTIONS

INTERIOR

- CSA Package (Canadian Specs)**
- Washer/Dryer
- Water Heater 16 Gallon Output

DRIVER CONVENIENCE

- Power Passenger Seat w/Power Footrest
- Power Driver/Front Passenger Sun Visors

GALLEY

- 22" 3-Burner, High Output Range w/Oven
- Free-Standing Dinette Table & Chairs (38F, 38L, 38R)
- Flip Down 10" LCD TV w/DVD Player (34H, 38L, 38R)
- Free Standing Dinette w/Credenza (38F, 38L, 38R)

LIVING ROOM

- Recliner w/Table (38L & 38R)
- Sofa Sleeper w/Air Mattress
- Ultraleather™ Love Seat (38F, 38L & 38R)

BEDROOM

- Adjustable Air Mattress

EXTERIOR

- Window Awning Package
- Auto-Locating Satellite Dish
- Dual AC w/Heat Pumps

AUTOMOTIVE

- Electric Awning
- Diamond Shield Clear Front Protective Mask
- Remote Keyless Entry

FLEETWOOD ADVANTAGES

- **Power Bridge Chassis™ (Fleetwood Exclusive)**
- **Full-Wall Slide (Patent Pending)**
- **Vacu-bond® Walls w/Smooth High Gloss Exterior Tuff-Coat® Fiberglass**
- **Large One-Piece Bonded-in Windshield**
- **Side Swinging Luggage Doors (Selected Areas)**
- **84" Interior Ceiling Height**
- **Neutral Loss, Low & High Voltage Protection**
- **Abundant Interior & Exterior Storage**

** CSA standards may require substitution or deletion to achieve conformance.

WEIGHTS & MEASUREMENTS

FREIGHTLINER® CHASSIS

MODELS	34H	38F	38L	38R
Engine Displacement (Liters)	6.7	6.7	6.7	6.7
Wheelbase (Inches)	208"	252"	252"	252"
GVWR (lbs) ¹	31,000	31,000	31,000	31,000
Front GAWR (lbs) ²	12,000	12,000	12,000	12,000
Rear GAWR (lbs) ²	19,000	19,000	19,000	19,000
GCWR (lbs) ³	41,000	41,000	41,000	41,000
Hitch Rating Weight (lbs) ¹	10,000	10,000	10,000	10,000
Tongue Weight (lbs) ¹	1,000	1,000	1,000	1,000
Fuel Capacity (gal)	100	100	100	100

DIMENSIONS & CAPACITIES

MODELS	34H	38F	38L	38R
Overall Length ⁴	34' 8"	38' 4"	38' 4"	38' 4"
Overall Height (with A/C)	12' 10"	12' 10"	12' 10"	12' 10"
Overall Width (maximum) ^{5, 6}	102"	102"	102"	102"
Interior Height (maximum)	84"	84"	84"	84"
Interior Width (maximum)	96"	96"	96"	96"
Fresh Water Holding Tank (gal)	105	105	105	105
Grey Water Holding Tank (gal)	75	75	75	75
Black Water Holding Tank (gal)	50	50	50	50
Appliance Propane Tank (gal) (WC) ⁷	37.5	37.5	37.5	37.5
Water Heater Tank (gal)	10	10	10	10

Liquid Weight Reference: Water (gal) = (8.3 lbs/3.8kgs) Fuel (gal) = 7.1 lbs/3.2 kgs Propane (gal) = (4.2 lbs/1.9 kgs)

Metric Conversion: Multiply pounds x 0.453 to obtain kilograms. Multiply gallons x 3.785 to obtain liters. Multiply liters x 61 to obtain cubic inches.

CHASSIS

Model: Freightliner® XCM-Series

Alternator Amps: 170 Amp Lecce Neville®

Engine: Cummins® ISBXT 6.7L

Transmission: Allison® 3000MH 6-Speed w/Electronic Shifter

Torque: 750 lb-ft @ 2400 RPM

Horsepower: 325HP

- GVWR (Gross Vehicle Weight Rating) is the maximum permissible weight of this fully loaded motor home. The GVWR is equal to or greater than the sum of the (UVW) unloaded vehicle weight plus the (OCCC) occupant cargo carrying capacity.*
- GAWR (Gross Axle Weight Rating) is the maximum permissible loaded weight a specific axle is designed to carry.
- GCWR (Gross Combined Weight Rating) is the value specified by the motor home manufacturer as the maximum allowable loaded weight of this motor home with its towed vehicle. Towing and braking capacities may be different. Refer to Fleetwood and chassis manufacturer's manuals for complete information.
- Length measured from front bumper to rear bumper (excludes accessories).
- Excludes safety equipment and awnings.
- Motor homes feature a body-width over 96" which will restrict your access to certain roads. Before purchasing, you should research any state and/or province road laws which may affect your usage.
- Tank manufacturer's listed water capacity (WC). Actual propane capacity is 80% of water listing as required by the safety code.

† The chassis manufacturer recommends the installation of a supplemental brake control system to activate the brakes on the vehicle or trailer you are towing. Hitch receiver ratings expressed are maximum for the hitch receiver installed and may require the purchase of additional equipment that is dependent on the weight of the towed load. Consult with hitch receiver manufacturer for further information.

N/A = Not available at time of printing.

*UVW and OCCC are found on the label containing the federal certification tag in each RV.

IMPORTANT—PLEASE READ: Product information, photography and illustrations included in this publication were as accurate as possible at the time of printing. For further product information and changes, please visit our website at www.fleetwoodrv.com or contact your local Fleetwood dealer. Prices, materials, design and specifications are subject to change without notice. All weights, fuel, liquid capacities and dimensions are approximate. Fleetwood has designed its recreational vehicles to provide a variety of uses for its customers. Each vehicle features optimal seating, sleeping, storage and fluid capacities. The user is responsible for selecting the proper combination of loads (i.e. occupants, equipment, fluids, cargo, etc.) to ensure that the vehicle's capacities are not exceeded.